

# Message from ALISE President Michele V. Cloonan



## ***Welcome to Denver and ALISE 2009!***

**T**his year's theme, "Transforming LIS Education for the 21st Century: i-Create," explores the complementary missions of libraries, museums, and archives as memory institutions, and the role of the information professional in these settings. Presentations will highlight LIS programs that are actively working to prepare professionals for new, cross-disciplinary work environments. Presenters at the conference will describe new curricular directions and research initiatives. As always, the conference will provide many opportunities to engage in discussions, in the sessions and during poster sessions, receptions, breaks, and the Birds-of-a-Feather lunch.

Tula Giannini and Paul Marty have put together a wonderful program. Keynote speakers are Joyce Ray, Shirley Amore, and Martín Gómez. We have arranged for a reception at the Denver Public Library which is conveniently located near the conference hotel. This year marks the 50th anniversary of JELIS which will be commemorated at a session being convened by the new editors.

It is wonderful to see you again and to have this opportunity to engage and to celebrate.

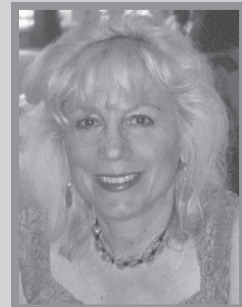
## **Welcome from the Co-chairs**

***Welcome to the ALISE 2009 Conference and welcome to Denver.*** We sincerely hope that you will find ALISE 09 a productive and exciting experience and an opportunity to meet with colleagues, exchange ideas, have lively discussions and attend the many and varied sessions from panels, papers, and SIGS to the ALISE Academy, Birds-of-a-Feather and Meet-the-Editor special sessions as well as the opening plenary session and reception at the Denver Public Library. We think you will find that the conference events present challenging ideas that will extend our notions of the LIS field across a broad range of information environments - from libraries, archives, and museums - to the emerging virtual environments or our global digital age in ways that form new linkages, commonalities, and relationships.

As carefully as we have planned the conference, we can imagine that your best moment might be simply a wonderful conversation or an exhilarating discussion at a panel session - all as a result of your participation. With digital conversation increasingly pervading our day-to-day lives, these face-to-face experiences now take on special meaning and become the stuff of memorable moments.

We are delighted that you are here in Denver at ALISE. We look forward to sharing with you this coming together of the LIS community.

Enjoy!



*Tula Giannini*



*Paul Marty*

# General Information

## Registration/ Materials

Registration will be open throughout the meeting in the Imperial Foyer.

**Registration hours:**

Tuesday 8:00 a.m. – 6:00 p.m.  
Wednesday 8:00 a.m. – 6:00 p.m.  
Thursday 8:00 a.m. – 6:00 p.m.  
Friday 8:00 a.m. – Noon

NOTE: attendees must wear name badges for entrance to all conference events, including receptions!

## Exhibits

Exhibits are located in the Imperial Foyer  
Times: Wednesday 8:00 a.m. – 5:00 p.m.  
Thursday 8:00 a.m. – 5:00 p.m.  
Friday 8:00 a.m. – Noon

## Cancellation Policy

All cancellations must be submitted in writing and faxed to the ALISE Executive Director at 312-419-8950. Cancellations received before 11:59 p.m. on December 14, 2008 are subject to a \$50 fee. After December 14, 2008, ALISE will give refunds only for documented medical emergencies. Refunds will be processed within 6 weeks after the meeting.

## Resolutions (see page 27)

## Message Center/Lost and Found

A message center, and lost-and-found checkpoint will be located in the registration area.

## Conference Evaluation

The information that you provide on your conference evaluation will be critical to our improvements for future meetings. This year ALISE will be conducting its evaluation via an online survey. Please watch your email for an invitation to complete the evaluation form online.

## Placement Service

Arrangements for interviews should be made directly between candidates and recruiters using the Job Placement message board in the ALISE Job Placement Center. Please check the board often. When you have made your appointments, check at the registration desk to verify your interview room.

## Grand Hyatt Denver

1750 Welton Street  
Denver, CO 80202-3999  
Tel: (303) 295-1234  
Fax: (303) 292-2472  
<http://granddenver.hyatt.com/hyatt/hotels/index.jsp>

# In Memoriam

**Confirmed as of December 18, 2008**

**Effie Astbury**  
**Therese Bissen Bard**  
**William Brace**  
**Maria Chavez-Hernandez**  
**Amy Knapp**  
**Ruth Leonard**  
**William Nasri**  
**Edith Phillips**  
**Allen Smith**  
**Robert S. Taylor**  
**Elinor Yungmeyer**

# 2010 Call for Proposals

OCLC and ALISE seek applicants for research grants. The OCLC/ALISE Library and Information Science Research Grant program awards up to \$15,000 to foster quality research by faculty in schools of library and information science. Projects should be completed within one year, and the findings published in the public domain. Application materials are available on the OCLC web site, at [www.oclc.org/research/grants/](http://www.oclc.org/research/grants/).

- Submission deadline for the 2010 awards is September 15, 2009.

● **For more information contact**  
● **OCLC Programs and Research**  
● **ResearchWeb@oclc.org**

# Conference at a Glance

## Tuesday

- 8:00 a.m. – 6:00 p.m.** Registration *Maroon Peak*  
**8:00 a.m. – 6:00 p.m.** Internet Café *Imperial Foyer*  
**8:00 a.m. – 8:00 p.m.** Placement Services *Blanca Peak*  
**8:30 a.m. – 1:30 p.m.** Council of Deans, Directors, and Program Chairs *Mt. Evans*  
**9:00 a.m. – 12:30 p.m.** WISE Workshop *Longs Peak*  
**1:00 p.m. – 4:00 p.m.** Vita and Portfolio Review *Grays Peak*  
**1:00 p.m. – 4:00 p.m.** ALISE Board of Directors Meeting *Torreys Peak*  
**1:30 p.m. – 5:00 p.m.** ALISE Academy Launching the Research Agenda *Mt. Columbia*  
 Retooling, Redirecting, and Revitalizing:  
 Research after Tenure and Promotion *Mt. Oxford*  
 Capping a Research Career with Glory *Mt. Princeton*  
**4:30 p.m. – 6:00 p.m.** ALISE Incoming and Outgoing Committee Chairs Meeting *Mt. Elbert*  
**5:30 p.m. – 6:00 p.m.** Works-in-Progress Poster Setup *Grand Ballroom*  
**6:00 p.m. – 7:00 p.m.** Opening Reception/Works-in-Progress Poster Session *Grand Ballroom*

## Wednesday

- 7:30 a.m. – 8:30 a.m.** First Timers' Breakfast *Mt. Sopris*  
**7:30 a.m. – 8:30 a.m.** SIG 1 *Grand Ballroom*  
**8:00 a.m. – 6:00 p.m.** Registration *Maroon Peak*  
**8:00 a.m. – 6:00 p.m.** Internet Café *Imperial Foyer*  
**8:00 a.m. – 8:00 p.m.** Placement Services *Blanca Peak*  
**8:00 a.m. – 5:00 p.m.** Exhibits *Imperial Foyer*  
**8:30 a.m. – 10:00 a.m.** Session 1: Panels & Juried Papers
- 1.1** A Town Hall Meeting: Transforming Digital Reference and Digital Reference Education *Mt. Evans A*  
**1.2** Tunnel Vision and Blind Spots Revisited *Mt. Evans B*  
**1.3** Juried Papers 1: Schools and Youth *Mt. Elbert*  
**1.4** Indigenous Memory, Identity, and Sustainability: Decolonizing Archival Education and Methods *Grays Peak*  
**1.5** Tenure – What It Takes *Longs Peak*
- 10:00 a.m. – 10:30 a.m.** Coffee Break *Imperial Foyer*  
**10:30 a.m. – Noon** Session 2: Panels & Juried Papers
- 2.1** Juried Papers 2: Social Networking *Mt. Evans A*  
**2.2** Juried Papers 3: Virtual Reference *Mt. Evans B*  
**2.3** Educators Preparing Educators: ALISE and ACRL Collaboration on Information Literacy *Mt. Elbert*  
**2.4** Education and Creation: The Formation and Legacy of Progressive Era Children's Librarians *Grays Peak*  
**2.5** Conversation with the ALISE Code of Ethics for LIS Educators Task Force *Longs Peak*
- Noon – 1:45 p.m.** Birds-of-a-Feather Lunch *Grand Ballroom*  
**Noon – 2:00 p.m.** Lunch on your own  
**2:00 p.m. – 3:30 p.m.** Plenary Session *Imperial Ballroom*  
**3:30 p.m. – 4:00 p.m.** Transportation to Denver Public Library *Main Lobby*  
**4:00 p.m. – 5:30 p.m.** Reception and Denver Public Library Tour *Denver Public Library Gallery*  
**5:45 p.m. – 7:00 p.m.** Past Presidents' Reception (by invitation only) *Presidential Suite*  
**5:45 p.m. – 6:15 p.m.** Doctoral Poster Session setup *Grand Ballroom*  
**5:45 p.m. – 6:15 p.m.** Doctoral Poster Judges' meeting *Torreys Peak*  
**6:15 p.m. – 8:15 p.m.** Doctoral Poster Judging *Grand Ballroom*  
**8:30 p.m. – 10:00 p.m.** Doctoral Student Reception *Grand Ballroom*

## Thursday

- 7:30 a.m. – 8:30 a.m.** School Representatives' Breakfast *Mt. Sopris*  
**7:30 a.m. – 8:30 a.m.** SIG 2 *Mt. Elbert*  
**8:00 a.m. – 6:00 p.m.** Registration *Maroon Peak*  
**8:00 a.m. – 6:00 p.m.** Internet Café *Imperial Foyer*  
**8:00 a.m. – 8:00 p.m.** Placement Services *Blanca Peak*  
**8:00 a.m. – 5:00 p.m.** Exhibits *Imperial Foyer*  
**8:30 a.m. – 10:00 a.m.** Session 3: Panels and Juried Papers

- 3.1** Juried Paper 4: Contexts *Mt. Evans A*  
**3.2** CREAT(ing) Effective Curriculum Review for LIS Education: Where Theory Meets Practice *Mt. Evans B*  
**3.3** Designing a Ph.D. Program In Cultural Preservation *Grays Peak*  
**3.4** Getting Connected Internationally *Longs Peak*  
**3.5** Intersectionality and Interdisciplinarity: LIS Research/Education and Studies of the "Other" *Pikes Peak*

- 10:00 a.m. – 10:30 a.m.** Coffee Break *Imperial Foyer*  
**10:30 a.m. – Noon** Session 4: Panels and Juried Papers

- 4.1** Juried Papers 5: Communities *Mt. Evans A*  
**4.2** Juried Papers 6: Digital Realities *Mt. Evans B*  
**4.3** Emerging Education Initiatives in Data Curation, Digital Information Management, and Digital Curation *Grays Peak*  
**4.4** Transforming the Roles of Part-Time and Adjunct Faculty in 21st Century LIS Education *Longs Peak*  
**4.5** Research SIG Panel 1 *Pikes Peak*

- 10:30 p.m. – Noon** JELIS Editorial Board Meeting *Torreys Peak*  
**Noon – 1:30 p.m.** Meet the Editors: JELIS Session and 50th Anniversary Celebration *Mt. Elbert*  
**1:30 p.m. – 3:00 p.m.** Session 5: Panels and Juried Papers

- 5.1** Juried Papers 7: Competencies *Mt. Evans A*  
**5.2** Juried Papers 8: Academic Origins and Trajectories *Mt. Evans B*  
**5.3** Going Digital – Culture, Information and Preservation: IMLS Grants Support a New Vision for LIS Education *Grays Peak*  
**5.4** Research SIG Panel 2 *Longs Peak*  
**5.5** Gender Issues in the Digital Age *Pikes Peak*

- 3:00 p.m. – 3:30 p.m.** Coffee Break *Imperial Foyer*  
**3:30 p.m. – 5:00 p.m.** ALISE Business Meeting *Imperial Ballroom*  
**6:30 p.m. – 8:00 p.m.** Awards Reception *Grand Ballroom*

## Friday

- 7:30 a.m. – 8:30 a.m.** Breakfast with a Vendor  
 ProQuest *Mt. Evans A*  
 Elsevier *Mt. Evans B*  
 SIG 3 *Mt. Elbert*  
**7:30 a.m. – 8:30 a.m.** Registration *Maroon Peak*  
**8:00 a.m. – Noon** Internet Café *Imperial Foyer*  
**8:00 a.m. – Noon** Placement Services *Imperial Foyer*  
**8:00 a.m. – Noon** Exhibits *Imperial Foyer*  
**8:30 a.m. – 10:00 a.m.** Session 6: Panels and Juried Papers
- 6.1** Juried Papers 9: Virtual Worlds *Mt. Evans A*  
**6.2** ALISE Awards Panel *Mt. Evans B*  
**6.3** Using e-Recruitment to Improve Diversity: Perspectives from Human Resources, Marketing, and Library Education *Grays Peak*  
**6.4** LIS Cataloging Education for the 21st Century: Expectations and Challenges *Longs Peak*  
**6.5** Meeting the Student Learning Outcomes Requirements for NCATE and ALA Accreditation *Pikes Peak*

- 10:00 a.m. – 10:30 a.m.** Coffee Break *Imperial Foyer*  
**10:30 a.m. – Noon** Session 7: Panels and Juried Papers

- 7.1** Creative Uses of Story as Information *Mt. Evans A*  
**7.2** OCLC/ALISE LIS Research Grant Papers *Mt. Evans B*  
**7.3** Cultural Heritage and the Information Profession *Grays Peak*  
**7.4** Transforming Visions of Youth for LIS Education in the 21st Century *Longs Peak*  
**7.5** Participatory Librarianship *Pikes Peak*

- 11:00 a.m. – Noon** Deans, Directors, and Chairs Meeting with ALA Office for Accreditation *Mt. Elbert*  
**Noon – 1:00 p.m.** Closing Conference Session *Imperial Ballroom*  
**1:00 p.m. – 2:30 p.m.** Meet the Editors: Publishing in LIS *Mt. Elbert*  
**1:00 p.m. – 4:00 p.m.** ALISE Board of Directors Meeting *Torreys Peak*



## INTRODUCING...



# STN<sup>®</sup>

## STN<sup>®</sup> Library & Information Science Training!

STN offers a special program  
to teach students in Library and  
Information Science Programs  
about STN!

### STN Library and Information Science Training Program!

STN offers a special program to teach students in Library Schools and Information Science Programs about STN!

*STN is the premier online **scientific and technical information service** dedicated to meeting the needs of information professionals throughout the world.* STN provides access to a wide range of databases and has been used by searchers in commercial, government, and academic settings for more than 25 years to access the highest quality scientific and technical data sources.

**STN searching is a key skill for Library School graduates. Our goal is to help students become proficient STN searchers, so that they can list "knowledge of STN" on their resumes.**

The STN Library and Information Science (LIS) Training Program is designed for use in many types of classes and includes:

- Student handbooks, with hands-on practice problems and solutions
- STN login IDs for faculty and students for online practice
- Access to STN via STN Express<sup>®</sup> or STN<sup>®</sup> on the Web<sup>SM</sup>
- Training and access to the CAS Help Desk

The STN LIS Training curriculum, training, and online searching will be offered to Library and Information Science Programs at no charge.

Get more information at [www.cas.org/stnlis.html](http://www.cas.org/stnlis.html) or by contacting CAS Customer Care at 1-800-753-4227.

STN is operated in North America by CAS, in Europe by FIZ Karlsruhe, and in Japan by JAICI.

CAS is a division of the American Chemical Society.

#### In North America

CAS  
STN North America  
Phone: 800-753-4227 (North America)  
614-447-3700 (worldwide)  
Internet: [www.cas.org](http://www.cas.org)

#### In Europe

FIZ Karlsruhe  
STN Europe  
Phone: +49-7247-808-555  
Internet: [www.stn-international.de](http://www.stn-international.de)

#### In Japan

JAICI  
STN Japan  
Phone: +81-3-5978-3621  
Internet: [www.jaici.or.jp](http://www.jaici.or.jp)

# ALISE 2009 Annual Conference

TUESDAY

## TUESDAY, JANUARY 20

### Professional Day

8:00 a.m. – 6:00 p.m.	Registration
8:00 a.m. – 6:00 p.m.	Internet Cafe
8:00 a.m. – 8:00 p.m.	Placement Services
8:30 a.m. – 1:30 p.m.	Deans, Directors and Program Chairs Meeting
9:00 a.m. – 12:30 p.m.	WISE Workshop
1:00 p.m. – 4:00 p.m.	Vita and Portfolio Review
1:00 p.m. – 4:00 p.m.	ALISE Board of Directors Meeting
1:30 p.m. – 5:00 p.m.	ALISE Academy
4:30 p.m. – 6:00 p.m.	ALISE Incoming and Outgoing Committee Chairs Meeting
5:30 p.m. – 6:00 p.m.	Works-in-Progress Poster Setup
6:00 p.m. – 7:00 p.m.	WIP Poster Session and Opening Reception (cash bar)

8:30 a.m. – 1:30 p.m. *Mount Evans*

### Deans, Directors, and Program Chairs Meeting

Organizers: **Elizabeth Aversa**, University of Alabama, and **Samantha Hastings**, University of South Carolina. Morning break courtesy of Alabama and South Carolina; lunch courtesy of University of South Florida and Wayne State University.

9:00 a.m. – 12:30 p.m. *Longs Peak*

### Community in Online Learning: Preparing WISE Scholars

The Web-based Information Science Education Consortium (WISE)

Moderators: **Linda C. Smith** and **Anne McKinney**, University of Illinois at Urbana-Champaign

This workshop is open to all conference attendees, especially doctoral students. Presenters will address key issues in online pedagogy for LIS instructors in a participatory environment. Participants will have the opportunity to contribute to the panel discussions and join breakout groups to discuss preparation for students' long-term professional success.

**Debbie Faires**, San Jose State University; **Bruce Kingma** and **Scott Nicholson**, Syracuse University; **Pat Lawton**, University of Pittsburgh; **Anne McKinney**, **Rae-Anne Montague**, **Linda C. Smith**, and **Richard Urban**, University of Illinois at Urbana-Champaign

1:00 p.m. – 4:00 p.m. *Grays Peak*

### Vita and Portfolio Review

Polish your professional presentation. Senior faculty will review and critique curriculum vitae and portfolios in one-on-one, 30-minute review sessions. Advance-registered participants will receive preference.

1:00 p.m. – 4:00 p.m. *Torreys Peak*

### ALISE Board of Directors

1:30 p.m. – 5:00 p.m.

### ALISE Academy

The ALISE Academy is a pre-conference professional development opportunity designed to inspire and guide LIS faculty and doctoral candidates in creating, building, and revising a research agenda, engaging in research activities, and maximizing the impact of one's research efforts at all career stages. Pre-registration is required. Each workshop is limited to 30 seats. *Sponsored by The Wilson Foundation and Second-Hand Knowledge*

### Academy Workshops include: Launching the Research Agenda

*Mt. Columbia*

Workshop Leader: **Suzanne Allard**, University of Tennessee

Target audience: Doctoral candidates and early-career faculty, and those who advise them.

### Retooling, Redirecting, and Revitalizing: Research after Tenure and Promotion

*Mt. Oxford*

Workshop Leader: **Kristin Eschenfelder**, University of Wisconsin

Target audience: Post-tenure and mid-career LIS faculty and those who advise them.

# ALISE 2009 Annual Conference

## Capping a Research Career with Glory

Mt. Princeton

Workshop Leader: **Anne Gilliland**, University of California, Los Angeles

Target audience: Post-tenure and mid-career LIS faculty and those who advise them.

4:30 p.m. – 6:00 p.m. Mount Elbert room

### ALISE Incoming and Outgoing Committee Chairs Meeting

All current and incoming ALISE committee chairs and SIG conveners are invited to attend this leadership meeting. By invitation only

5:30 p.m. – 6:00 p.m. Grand Ballroom  
**Works-in-Progress Poster Setup**

6:00 p.m. – 7:00 p.m. Grand Ballroom  
**Works-in-Progress Poster Session and Opening Reception (cash bar)**

The Works-in-Progress session, with more than 50 posters from faculty, doctoral students, and academic librarians, presents research in its formative stages and provides an opportunity for presenters and conference attendees to exchange ideas.

TUESDAY



## Innovative Research Internationally Recognized Faculty Infinite Possibilities



The *iSchool* at Drexel has educated exceptional information professionals since 1892. Dedicated to uniting people, technology and knowledge, the college is home to a distinctively collaborative and diverse body of researchers. The PhD in Information Studies encompasses topics ranging from library resources and services to software engineering.

Explore the information world at The *iSchool* at Drexel.

The **iSchool**  
at Drexel  
College of Information  
Science and Technology





# ALISE 2009 Annual Conference

WEDNESDAY

## WEDNESDAY, JANUARY 21

### Wednesday Overview

7:30 a.m. – 8:30 a.m.	First Timers' Breakfast
7:30 a.m. – 8:30 a.m.	SIG Business, Planning, and Discussion Meetings
8:00 a.m. – 6:00 p.m.	Registration
8:00 a.m. – 6:00 p.m.	Internet Café
8:00 a.m. – 8:00 p.m.	Placement Services
8:00 a.m. – 5:00 p.m.	Exhibits
8:30 a.m. – 10:00 a.m.	Session 1: Panels & Juried Papers
10:00 a.m. – 10:30 a.m.	Coffee Break
10:30 a.m. – 12:00 p.m.	Session 2: Panels & Juried Papers
12:00 p.m. – 1:45 p.m.	Birds-of-a-Feather Lunch
2:00 p.m. – 3:30 p.m.	Plenary Session
3:30 p.m. – 4:00 p.m.	Transportation to Denver Public Library
4:00 p.m. – 5:30 p.m.	Reception and Denver Public Library Tour
5:45 p.m. – 7:00 p.m.	Past Presidents' Reception (by invitation only)
5:45 p.m. – 6:15 p.m.	Doctoral Poster Session setup
5:45 p.m. – 6:15 p.m.	Doctoral Poster Judges' meeting
6:15 p.m. – 8:15 p.m.	Doctoral Poster judging
8:30 p.m. – 10:00 p.m.	Doctoral Student Research Poster Session and Reception (dessert and cash bar)

7:30 a.m. – 8:30 a.m. *Mt. Sopris*

### First Timers' Breakfast

Host: ALISE President-Elect, **Linda Smith**, University of Illinois at Urbana-Champaign  
Learn about ALISE and how you can get involved.

7:30 a.m. – 8:30 a.m. *Grand Ballroom*

### SIG Session I: Business, Planning, and Discussion Meetings

Join special interest groups for planning and informal discussion.

Conveners:

*Archives* - **Cecilia Salvatore**, Emporia State University

*Distance Education* - **Scott Klinger**, University of North Texas

*Gender* - **Kay Cassell**, Rutgers University

*Information Ethics* - **Mark Winston**, John Cotton Dana Library, Rutgers University; and **Kenneth R. Fleischmann**, University of Maryland  
*Research* - **Susan Burke** and **Betsy Van de Veer** Martens, University of Oklahoma  
*Technical Services* - **Barbara Marson**, East Carolina University

8:30 a.m. – 10:00 a.m.

### Session 1: Programs and Juried Papers

1.1 *Mt. Evans A*

### A Town Hall Meeting: Transforming Digital Reference and Digital Reference Education

Moderator: **Eileen G. Abels**, Drexel University

This town-hall-style panel session will focus on LIS education for digital reference services, which poses a challenge to educators due to the rapidly changing nature of information technology and communication styles.

**Denise Agosto**, Drexel University; **Lorri Mon**, Florida State University; and **Soo Young Rieh**, University of Michigan

1.2 *Mt. Evans B*

### Tunnel Vision and Blind Spots Revisited

Moderator: **Penelope A. Grant**, San Jose State University

In his 1999 article, "Tunnel Vision and Blind Spots: What the Past Tells us about the Present: Reflections on the Twentieth-Century History of American Librarianship," *The Library Quarterly*, Wayne A. Wiegand noted "at the end of the twentieth century the ubiquitous library . . . remains one of the most understudied of American institutions. Currently we lack a solid body of scholarship that critically analyzes the multiple roles that libraries of all types have played and are playing in their host communities." Panel members will present their papers on how LIS has changed since this statement was made and where LIS education may be heading in a world becoming increasingly more interactive, participatory, and porous.

# ALISE 2009 Annual Conference

**Gary Radford**, Fairleigh Dickinson University;  
**Marie Radford**, Rutgers University; **Anthony Bernier**, San Jose State University; and **James Elmborg**, University of Iowa.

1.3 Mt. Elbert

## **Juried Papers 1: Schools and Youth**

Moderator: **Renee Franklin**, Syracuse University

This session explores the challenges of youth and of preparing professionals to best serve youth. Authors will discuss issues of certification, adolescent reading, and preteens in virtual worlds.

## **Exploratory Study of the Relationship between National Board Certification in Library Media and Information Science and Student Academic Achievement**

**Gail K. Dickinson**, Old Dominion College

## **Adolescent Reading: The Realism Appeal, the Reality, and the E-Learning**

**Ya-Ling Lu**, Rutgers University

## **Tip of the Iceberg: Meaning, Identity, and Literacy in Preteen Virtual Worlds.**

**Eric Meyers**, University of Washington

1.4 Grays Peak

## **Indigenous Memory, Identity, and Sustainability: Decolonizing Archival Education and Methods**

Archives SIG

Convener: **Cecilia L. Salvatore**, Emporia State University

Scholars who have conducted research on and with archives in indigenous and marginalized communities will describe the Western hegemony in current archival systems and practices. They will suggest ways to decolonize and pluralize archival education, thus giving voice to indigenous knowledge systems and community-based rules and norms for preserving memory and identity. They will suggest methods for archival education that is inclusive and culturally responsive.

Panelists:

**Kimberly Anderson**, University of California, Los Angeles

**Omaira Brunal-Perry**, University of Guam

**Andrew Lau**, University of California, Los Angeles

**Jonathan Pringle**, Museum of Northern Arizona

**Cecilia Salvatore**, Emporia State University

1.5 Longs Peak

## **Tenure – What it takes**

Doctoral Student SIG

Conveners: **Heather Hill** and **Jennifer Crispin**, University of Missouri

What does it take to earn tenure and what kind of strategies will help achieve it? How is the process different at different types of schools? Join us for a conversation with those faculty who have earned tenure and those who have reviewed tenure packages.

Panelists:

**Lee Shiflett**, University of North Carolina, Greensboro

**Melissa Gross**, Florida State University

**Lynn Akin**, Texas Women's University

10:00 a.m. – 10:30 a.m. Imperial Foyer

## **Coffee Break**

10:30 a.m. – 12:00 p.m.

## **Session 2: Panels and Juried Papers**

2.1 Mt. Evans A

## **Juried Papers 2: Social Networking**

Moderator: **R. David Lankes**, Syracuse University

Social networks are changing the way students interact and learn. Authors at this session will look at the impact of social networks on learning and teaching.

## **Integrating Social Networking Tools in School Library Education**

**Gail K. Dickinson**, Old Dominion University

WEDNESDAY



# ALISE 2009 Annual Conference

WEDNESDAY

## **Revising the Reference Curriculum: Collaborative Learning and Social Networking in the Online Environment**

**Jenny Bossaller**, University of Southern Mississippi

## **Name Networks: A Content-Based Method for Automatic Discovery of Social Networks to Study Collaborative Learning**

**Anatoliy Gruz**, University of Illinois at Urbana-Champaign

2.2 Mt. Evans B.

## **Juried Papers 3: Virtual Reference**

Moderator: **Kenneth Lavender**, Syracuse University

This session considers the scholarship of virtual reference, and the integration of VR into the classroom. Authors will present case studies of students answering questions and models for reference encounters.

## **Can Master's Level Students in LIS Programs Provide Effective Virtual Reference Services (VRS)? A Report of a LIS Education Program and ASERL Collaborative Initiative**

**Feili Tu**, University of South Carolina

## **A Discourse Analysis of the Question-Answering Service of the Internet Public Library**

**Jung-ran Park**, Drexel University

## **CREATING a New Theoretical Model for Reference Encounters in Synchronous Face-to-Face and Virtual Environments**

**Marie Radford**, Rutgers University; and **Lynn Silipigni** Connaway, OCLC

2.3 Mt. Elbert

## **Educators Preparing Educators: ALISE and ACRL Collaboration on Information Literacy**

Moderator: **John M. Budd**, University of Missouri

A working group on preparing graduates to succeed at instruction in academic libraries is building on ALISE and ACRL strengths. A panel of members of the group will share their progress on collaboration and will engage the audience in exploring ideas that can further the work towards preparing graduates for instructional positions in academic libraries.

**John M. Budd**, University of Missouri; **Lisa Hinchliffe**, University of Illinois at Urbana-Champaign; **Sheril Hook**, University of Toronto; **Heidi Julien**, University of Alberta; and **Kathy L. Magarrell**, University of Iowa

2.4 Grays Peak

## **Education and Creation: The Formation and Legacy of Progressive Era Children's Librarians**

Historical Perspectives SIG

Conveners: **Gale Eaton**, University of Rhode Island; and **Holly Willett**, Rowan University

Pioneering children's librarians often lacked formal academic credentials, whereas librarians from 1900 forward had the opportunity to be trained especially for library work with children. How did the founders' own educations affect their careers and their contributions to the educational development of children? And how did the training received by "next generation" children's librarians contribute to the growth of the profession?

Panelists:

**Melanie Kimball**, Simmons College: Creating a Profession: Education and Training for Early 20th-Century Children's Librarians

**Gale Eaton**, University of Rhode Island:

Organizing the Grass Roots: Alice M. Jordan and the Round Table of Children's Librarians

**Holly Willett**, Rowan University: Mid-century Consciousness Raising: Charlemae Hill Rollins and African American Children's Literature

# ALISE 2009 Annual Conference

WEDNESDAY

## 2.5 Longs Peak

### Conversation with the ALISE Code of Ethics for LIS Educators Task Force

Information Ethics SIG

Conveners: **Kenneth R. Fleishmann**, University of Maryland; and **Mark Winston**, John Cotton Dana Library, Rutgers University

The Task Force will report in depth on the proposed Code of Ethics and the process that they used to develop the Code, and to get additional feedback from ALISE members about the Code. In addition, the program will provide an opportunity for discussion of how it can be put into most widespread and effective use, and how it can help ALISE member schools to improve their educational programs.

Moderator: **Mark Winston**

Panelists:

**Toni Carbo**, University of Pittsburgh

**Ann Curry**, University of Alberta

**Johannes Britz**, University of Wisconsin-Milwaukee

**Mary Niles Maack**, University of California, Los Angeles

**Jean Preer**, Indiana University-Indianapolis

**12:00 p.m. – 1:45 p.m.** *Grand Ballroom*

### Birds of a Feather

Organizer: **Stephen Bajjaly**, Wayne State University

Meet fellow conferees who share your teaching subject interests for informal, roundtable discussions about course content, teaching techniques, learning activities, and best practices. Attend looking for advice or offering knowledge and experience. Discover contacts for the rest of the conference and beyond. Feel free to bring a brown-bag lunch if you wish. Lunch options will be available for purchase at this session.

- *Administration and Management* - **Tim Sineath**, University of Kentucky
- *Archives/Special Collections* - **Mary E. Choquette**, Catholic University of America
- *Cataloging, Classification and Metadata* - **Elaine Yontz**, Valdosta State University
- *Community Informatics/Service Learning* - **Jim Elmborg**, University of Iowa
- *Digital Reference* - **Eileen Abels**, Drexel University
- *Distance Learning* - **June Lester**, University of Oklahoma
- *Ethics* - **Jean Preer**, Indiana University - Indianapolis
- *Foundations of LIS* - **Julie Hersberger**, University of North Carolina - Greensboro
- *History of the Book, Libraries, and Info Profession* - **Catherine Closet-Crane**, Emporia State University
- *Information Literacy* - **Heidi Julien**, University of Alberta, and **John Budd**, University of Missouri-Columbia
- *Information Organization Competencies* - **Ingrid Hsieh-Yee**, Catholic University of America
- *Intellectual Freedom* - **Shannon Oltmann**, Indiana University
- *Public Libraries* - **Larry White**, East Carolina University
- *Research Methods* - **Lisa Given**, University of Alberta
- *Social Media Use* - **Derek Hansen**, University of Maryland
- *Undergraduates* - **Nathan Johnson**, University of Wisconsin - Madison
- *Youth Services* - **Betsy Hearne**, University of Illinois at Urbana-Champaign

**2:00 p.m. – 3:30 p.m.** *Imperial Ballroom*

### Plenary Session

**President's Welcome: ALISE President Michele V. Cloonan**, Simmons College

**Introduction of Keynote Speakers by Tula Giannini**

# ALISE 2009 Annual Conference

WEDNESDAY

## **Transformation from the Inside Out: Developing Passionate Library Professionals who Transform Communities**

According to a recent OCLC study of library support in American, From Awareness to Funding, the belief that the library is a transformational force in people's lives is directly related to the level of funding support. The study also found that the perceptions of the librarian are strongly related to support. "Passionate librarians" who are involved in the community make a difference.

This presentation will explore the knowledge, skills, and abilities that professionals entering the profession will require to be transformative agents in their libraries and communities.

**Shirley Amore** has been City Librarian for the Denver Public Library for two years. In her 35 years as a library professional, she has worked in public libraries in Connecticut, Florida, and Colorado and seen first-hand the sea change that has occurred in public libraries. Ms. Amore will discuss the challenges and opportunities facing public libraries today and into the future, and the knowledge, skills, and abilities that professionals entering the profession will require to meet these challenges.

## **Building a Community of Practice**

In 2005, the Urban Libraries Council (ULC) launched an IMLS-funded project called "librarians for America's neighborhoods". This project provided scholarships to over two dozen partner libraries that in turn recruited close to 200 ethnically diverse graduate library school students who were enrolled, online and on campus, at 22 schools of library science and information management. During the project period the ULC-sponsored "scholars" were given opportunities to meet local community leaders and learn about how decisions are made by the library. ULC supplemented the educational and community experiences of the scholars with two major conferences designed to create awareness

of and understanding about urban librarianship. In addition, scholars provided ULC with important data about their experiences through a structured national online conversation. Martín Gómez, the former president and CEO of ULC, will provide a summary of the lessons learned from this project.

**Martín J. Gómez** was recently appointed Executive Director of the San Mateo County Library System in Northern California. Prior to this appointment, he served as President and Chief Executive Officer of the Urban Libraries Council (ULC), an association of more than 180 leading urban and metropolitan public libraries across North America.

## **The Digital Revolution: Developing Library Services for the Next Generation.**

The Digital Revolution is producing so much digital information that selection, management, preservation, presentation, discovery and re-use of digital resources are becoming increasingly daunting challenges. At the same time, information seekers are more and more often going online to meet their information needs, and for many of them "if it isn't online, it doesn't exist." Libraries must address these challenges if they are to continue their traditional mission of preserving knowledge and helping people find and use the information they need. Libraries need not only technical infrastructure but also human capacity with skills to deal with the data deluge.

**Joyce Ray**, IMLS Associate Deputy Director for Library Services, will discuss how IMLS programs are helping professionals to develop the technical and professional capacity for the next generation of library services.

# ALISE 2009 Annual Conference

**Joyce Ray**, Associate Deputy Director for Library Services, Institute of Museum and Library Services, directs grant programs that distribute more than \$40 million annually to libraries, archives, institutions of higher education, and related organizations. These include the National Leadership Grant program, which funds research, demonstration and collaboration projects as well as the development of digital tools and services, and the Laura Bush 21st Century Librarian Program, which has invested more than \$100 million since 2003 in graduate programs of library and information science, including master's and doctoral education, pre-professional recruitment, continuing education, research on librarianship as a profession, early career development to support the research of tenure-track untenured faculty, and curriculum development to enable LIS schools to develop new courses or programs to meet the changing needs of the profession.

She has a master's degree in library and information science and a Ph.D. in American history, both from The University of Texas at Austin. Before joining IMLS in 1997, she was head of special collections at The University of Texas Health Science Center at San Antonio, an archivist at the National Archives and Records Administration, and program director for technological evaluation at the National Historical Publications and Records Commission. She has served as U.S. organizer of the International Digital Cultural Content Forum and on the program committees of the Joint Conference on Digital Libraries and the International Data Curation Conference.

## **3:30 p.m. – 4:00 p.m. Transportation to Denver Public Library**

Meet in the main lobby of the Grand Hyatt.

## **4:00 p.m. – 5:30 p.m. Reception and Library Tour at the Denver Public Library**

Gallery room, 10 W 14th Avenue Pkwy, Denver, CO 80204, (720) 865-1111

*Sponsored by Pratt Institute and Simmons College*

## **5:45 p.m. – 7:00 p.m. Presidential Suite**

**Past President's Reception** (by invitation only)

## **5:45 p.m. – 6:15 p.m. Grand Ballroom**

**Doctoral Poster Session Setup**

## **5:45 p.m. – 6:15 p.m. Torreys Peak**

**Doctoral Poster Judges' Meeting**

## **6:15 p.m. – 8:15 p.m. Grand Ballroom**

**Doctoral Poster Judging**

## **8:30 p.m. – 10:00 p.m. Grand Ballroom**

**Doctoral Student Research Poster Session and Reception** (cash bar and dessert)

WEDNESDAY



# ALISE 2009 Annual Conference

THURSDAY

## THURSDAY, JANUARY 22

### Thursday Overview

7:30 a.m. – 8:30 a.m.	School Reps Breakfast
7:30 a.m. – 8:30 a.m.	SIG Session 2: Business, Planning, and Discussion Meetings
8:00 a.m. – 6:00 p.m.	Registration
8:00 a.m. – 6:00 p.m.	Internet Café
8:00 a.m. – 8:00 p.m.	Placement Services
8:00 a.m. – 5:00 p.m.	Exhibits
8:30 a.m. – 10:00 a.m.	Session 3: Panels and Juried Papers
10:00 a.m. – 10:30 a.m.	Coffee Break
10:30 a.m. – 12:00 p.m.	Session 4: Panels and Juried Papers
10:30 p.m. – 12:00 p.m.	JELIS Editorial Board Meeting
12:00 p.m. – 1:30 p.m.	Meet the Editors: JELIS Session and 50th Anniversary Celebration
1:30 p.m. – 3:00 p.m.	Session 5: Panels and Juried Papers
3:00 p.m. – 3:30 p.m.	Coffee Break
3:30 p.m. – 5:00 p.m.	ALISE Business Meeting
6:30 p.m. – 8:00 p.m.	Awards Reception (cash bar)

7:30 a.m. – 8:30 a.m. *Mt. Sopris*  
**School Representatives' Breakfast**

7:30 a.m. – 8:30 a.m. *Mt. Elbert*  
**SIG Session 2: Business, Planning, and Discussion Meetings**

Join special interest groups for planning and informal discussion.

*Conveners:*

*Assistant Deans and Directors* - **Rae-Ann Montague**, University of Illinois at Urbana-Champaign  
*Curriculum* - **Linda Lillard**, Emporia State University

*Doctoral Students* - **Heather Hill** and **Jennifer Crispin**, University of Missouri  
*Information Policy* - **Sergio Chaparro**, Simmons College and **Mary Stansbury**, Kent State University

*Multicultural, Ethnic and Humanistic Concerns* - **Cecilia Salvatore**, Emporia State University; **Susan Burke**, University of Oklahoma; and

**Clara Chu**, University of California, Los Angeles  
*New Faculty* - **Andrew Wertheimer**, University of Hawaii  
*School Library Media* - **Allison Kaplan**, University of Wisconsin – Madison  
*Teaching Methods* - **Jami Jones**, East Carolina University

8:30 a.m. – 10:00 a.m.  
**Session 3: Panels and Juried Papers**

3.1 *Mt. Evans A*

**Juried Paper 4: Contexts**

*Moderator:* **R. David Lankes**, Syracuse University

How is the field of library and information science practiced in a variety of contexts? The authors will discuss the roles that LIS can play in museum and medical settings.

**Building Rapport between LIS and Museum Studies**

**Annie Kim**, Emporia State University

**A Novel Approach to Educating Medical Informationists**

**Claudia Gollop**, University of North Carolina, Chapel Hill

**Lessons for Growth in the Education of Health Information Services for People Living with HIV/AIDS: Perspectives of Directors/Managers of Public Libraries**  
**Bharat Mehra**, University of Tennessee

3.2 *Mt. Evans B*

**CREAT(ing) Effective Curriculum Review for LIS Education: Where Theory Meets Practice**

*Moderator:* **Lisa M. Given**, University of Alberta

Ongoing curricular review is vital to the development of effective education practices in Library and Information Studies. This program will address such questions as: What are the implications of "core competencies" for curriculum review? What can LIS educators learn from the Education research and practice of curriculum review? How can mixed research

# ALISE 2009 Annual Conference

THURSDAY

methods guide curriculum review? How is LIS crossing disciplinary boundaries in program development and what are the implications for curriculum review?

**Lisa M. Given**, University of Alberta; **John Budd**, University of Missouri-Columbia; and **Marie L. Radford**, Rutgers University

### 3.3 Grays Peak

#### **Designing a Ph.D. Program In Cultural Preservation**

Moderators: **Ellen Cunningham-Kruppa** and **Philip Doty**

In fall 2006, the School of Information at the University of Texas at Austin began an innovative doctoral fellowship program in preservation, admitting a first cohort of three students. The proposed panel will describe the fellowship program, and how the fellowships articulate with the educational mission of the iSchool and its general Ph.D. program, and will share with the audience the results of the program thus far.

**Ellen Cunningham-Kruppa**, **Craig Blaha**, **Sarah Kim**, **Snowden Becker**, and **Philip Doty**, University of Texas at Austin

### 3.4 Longs Peak

#### **Getting Connected Internationally**

International Education SIG

Convener: **Lesley Farmer**, California State University, Long Beach

Four pathways for international education participation for discussion includes international partnering guidelines, how IMLS can support collaboration among educators internationally, ways to participate in international professional organizations and developing an international education graduate course will be the topics for discussion. Attendees will be able to identify and use resources to get involved in international education efforts and help their own students become internationally engaged.

Panelists:

**Rebecca Miller Banner**, University of Kentucky  
**Joyce Ray**, Institute of Museum and Library Services

**Lesley Farmer**, California State University, Long Beach

**Louise Robbins**, University of Wisconsin-Madison

**Brigitte Doelgast**, Goethe-Institute

### 3.5 Pikes Peak

#### **Intersectionality and Interdisciplinarity: LIS Research/Education and Studies of the "Other"**

Multicultural, Ethnic and Humanistic Concerns SIG

Conveners: **Clara M. Chu**, University of California-Los Angeles; **Cecilia Salvatore**, Emporia; and **Susan Burke**, University of Oklahoma

This panel discussion examines how LIS and studies of the Other (e.g., ethnic, queer, women's and area studies, etc.) engage to enhance LIS research, education and practice. What points of intersectionality have been/should be explored, and what interdisciplinary relationships exist to address equity of information access and practices?

Moderator: **Clara M. Chu**, UCLA

Panelists:

**Ruth Bayhille**, **Rebecca Dean**, **Patrick Keilty**, **Liladhar Pendse**, **Vivian Wong**, and **Mary Niles Maack**, University of California, Los Angeles; **Noriko Asato**, University of Hawaii; and **Bharat Mehra**, University of Tennessee

**10:00 a.m. – 10:30 a.m. Imperial Foyer  
Coffee Break**

**10:30 a.m. – 12:00 p.m. Session 4: Panels  
and Juried Papers**

### 4.1 Mt. Evans A

#### **Juried Papers 5: Communities**

Moderator: **Renee Franklin**, Syracuse University

# ALISE 2009 Annual Conference

## THURSDAY

These presentations explore how educators can prepare LIS students to work in—and have an impact on—communities. Topics will cover social inclusion, improvised service in disaster situations, and communities of practice.

### **Creating Community Cohesion in Chicago and Beyond: Can LIS Education Aid Social Inclusion?**

**Christine Hagar**, Dominican University

### **Innovative Information Services Improvised During Disasters: Evidence Based Education Models to Prepare Students and Practitioners for Shifts in Community Needs**

**Michelynn McKnight**, Louisiana State University

### **'We Create': Blended Learning in LIS courses Using the Communities of Practice Framework**

**Joyce Yukawa**, College of St. Catherine

#### **4.2 Mt. Evans B**

### **Juried Papers 6: Digital Realities**

Moderator: **Lorri Mon**, Florida State University

How can we best prepare students to learn about and work with digital libraries? Digital library labs, Curation Junction, and Wikipedia are among the topics considered.

### **Digital Library Education Labs**

**Xia Lin** and **Eileen Abels**, Drexel University

### **Curation Junction, What's Your Function? Defining What It Means to Do Digital Curation in Order to Teach It**

**Cal Lee**, University of North Carolina – Chapel Hill

### **Improving an online MLS course through multimedia enhancements**

**Katherine Schilling**, Indiana University

#### **4.3 Grays Peak**

### **Emerging Education Initiatives in Data Curation, Digital Information Management, and Digital Curation**

Moderator: **Joyce Ray**, Institute of Museum and Library Services

For the last three years, IMLS has been funding new LIS education initiatives that address emerging demand for information professionals trained in data curation, digital information management, and digital curation. This panel represents three of the first programs funded in this area under the Laura Bush 21st Century Librarian Program.

**Helen Tibbo**, University of North Carolina at Chapel Hill; **Jana Bradley** and **Peter Botticelli**, University of Arizona; and **Carole L. Palmer** and **Melissa Cragin**, University of Illinois at Urbana-Champaign

#### **4.4 Longs Peak**

### **Transforming the Roles of Part-Time and Adjunct Faculty in 21st Century LIS Education**

Part Time and Adjunct Faculty SIG

Convener: **Dan Fuller**, San Jose State University

Moderator: **Dan Fuller**

A panel of full-time and part-time educators will discuss the part-time and adjunct faculty research and the practice of teaching as part-time or adjunct faculty. After an overview of part-time and adjunct faculty in the context of their institutions, the presenters will discuss their motivations, contributions, and expectations. The panel will explore the transformations of part-time and adjunct faculty by technology and the pedagogical impact of teaching part time.

Panelists:

**Penny Grant**, San Jose State University

**Nancy Lensenmeyer**, Kent State University and OCLC

**June Lester**, University of Oklahoma

# ALISE 2009 Annual Conference

THURSDAY

## 4.5 Pikes Peak

### Research SIG Panel 1

Conveners: **Susan Burke** and **Betsy Van de Veer Martens**, University of Oklahoma

This panel represents innovative work by current LIS faculty members using a variety of methodological approaches to the challenge of identifying, compiling and analyzing data relevant to the increasing range of potential LIS research areas.

Panelists:

**Glynn Harmon**, University of Texas at Austin  
**Kalyani Ankem**, North Carolina Central University

**Phillip M. Edwards**, North Carolina State University Libraries; and **Amy VanScoy**, University of North Carolina at Chapel Hill

**10:30 p.m. – 12:00 p.m. Torrey's Peak**  
**JELIS Editorial Board Meeting**

**12:00 p.m. – 1:30 p.m. Mt. Elbert**  
**Meet the Editors: JELIS Session and 50th Anniversary Celebration**

Cake will be served.

**1:30 p.m. – 3:00 p.m.**  
**Session 5: Panels and Papers**

## 5.1 Mt. Evans A

### Juried Papers 7: Competencies

Moderator: **R. David Lankes**, Syracuse University

What is the knowledge base for an interdisciplinary field such as for LIS? These papers will explore ways of determining necessary competencies from a variety of perspectives.

### Educating Library Directors: Stage Three

**Maureen Mackenzie**, Dowling College; and **James Smith**, St. Francis College

### Workforce Issues in Library and Information Science (WILIS): Using an Alumni Survey to Better Prepare Students in the Digital Age

**Joanne Gard Marshall, Jennifer Craft Morgan, Victor W. Marshall, Deborah Barreau, Barbara Moran, Paul Solomon, Susan Rathbun Grubb**, and **Cheryl A. Thompson**, University of North Carolina at Chapel Hill

### What Should "Librarians" Know? Current Data on Support Staff Competencies.

**Rachel Applegate**, Indiana University

## 5.2 Mt. Evans B

### Juried Papers 8: Academic Origins and Trajectories

Moderator: **Bruce Kingma**, Syracuse University

The past helps explain the present, and the present sets the agenda for the future. These papers explore LIS traditions, values, and visions, from the past to the future.

### Mpact Family Trees: Quantifying Academic Genealogy in Library and Information Science

**Terrell Russell** and **Cassidy R. Sugimoto**, University of North Carolina at Chapel Hill

### Everything Old Is New Again: The Evolution of Library and Information Science Education from L to I

**Kathy Burnett**, Florida State University

### i-Create Accelerated Discovery: A 2020 Educational Vision

**Glynn Harmon**, University of Texas at Austin

## 5.3 Grays Peak

### Going Digital – Culture, Information and Preservation: IMLS Grants Support a New Vision for LIS Education

Moderator: **Tula Giannini**, Pratt Institute

As the digital information transforms the physicality of place that is mirrored in the "virtuality" of Internet space, we are challenged to integrate and make meaningful these dynamic states of being across disciplines in ways that



# ALISE 2009 Annual Conference

## THURSDAY

serve our culturally diverse society and our mission of teaching and learning. This panel features five 2008 IMLS grants that define new areas for LIS education and research from digital humanities and curation to museum libraries in the digital world.

**Helen R. Tibbo**, University of North Carolina at Chapel Hill; **Megan Winget**, University of Texas at Austin; **Kari Kraus**, University of Maryland; **Allen Renear**, University of Illinois at Urbana-Champaign; and **Elizabeth Yakel**, University of Michigan

### 5.4 Longs Peak

#### Research SIG Panel 2

Conveners: **Susan Burke**, and **Betsy Van der Veer Martens**, University of Oklahoma

This panel represents innovative work by current LIS doctoral students using a variety of methodological approaches to the challenge of identifying, compiling and analyzing data relevant to the increasing range of potential LIS research areas.

#### Panelists:

**Melanie Feinberg**, **Lisa Nathan**, **Deborah Turner**, **Kris Unsworth**, University of Washington  
**Catherine Closet-Crane**, Emporia State University  
**Andrea Japzon** and **Denise E. Agosto**, Drexel University

### 5.5 Pikes Peak

#### Gender Issues in the Digital Age

Gender Issues SIG

Convener: **Kay Cassell**, Rutgers University

This program explores gender issues in the digital age. How does the gender issue play out in the digital world? Is there more equality or do our biases carry over to the digital world? The presenters will explore LCSH, LibraryThing, and Second Life as well as issues of recruitment of women and LIS education.

#### Panelists:

**Sharon Stoerger**, School of Library and Information Science, Indiana University, "Myth or Reality: Library Education in Second Life"  
**Bharat Mehra**, School of Information Sciences, University of Tennessee, "Digital Actions in a Strategic Plan in Library and Information Science Education to Fairly Represent People of Diverse Sexual Orientations and Gender Issues"  
**Claire R. McInerney**, School of Communication, Information and Library Studies, Rutgers University, "Recruiting Information Technology Specialists for Library Work and Faculty Positions: What's Gender Got to Do with It?"  
**Melissa Adler**, School of Library and Information Studies, University of Wisconsin Madison, "Who is the Authority on Transgender Vocabularies? A Comparative Study of Controlled Terms in LCSH and User-Generated Tags in Library Thing"

**3:00 p.m. – 3:30 p.m. Imperial Foyer**  
**Coffee Break**

**3:30 p.m. – 5:00 p.m. Imperial Ballroom**  
**ALISE Business Meeting**

**6:30 p.m. – 8:00 p.m. Grand Ballroom**  
**All Conference & Awards Reception**

# ALISE 2009 Annual Conference

## FRIDAY, JANUARY 23

### Friday Overview

7:30 a.m. – 8:30 a.m.	Breakfast with a Vendor
7:30 a.m. – 8:30 a.m.	SIG Business, Planning and Discussion Meetings
8:00 a.m. – 12:00 p.m.	Registration
8:00 a.m. – 12:00 p.m.	Internet Café
8:00 a.m. – 12:00 p.m.	Placement Services
8:00 a.m. – 12:00 p.m.	Exhibits
8:30 a.m. – 10:00 a.m.	Session 6: Panels and Juried Papers
10:00 a.m. – 10:30 a.m.	Coffee Break
10:30 a.m. – 12:00 p.m.	Session 7: Panels and Juried Papers
11:00 a.m. – 12:00 p.m.	Deans, Directors, and Chairs Meeting with ALA Office for Accreditation
12:00 p.m. – 1:00 p.m.	Closing Conference Session
1:00 p.m. – 2:30 p.m.	Meet the Editors: Publishing in LIS
1:00 p.m. – 4:00 p.m.	ALISE Board of Directors Meeting

7:30 a.m. – 8:30 a.m.

### Breakfast with a Vendor

#### Breakfast with Proquest *Mt. Evans A.*

Join Proquest for a complimentary breakfast buffet and learn more about the ProQuest and Dialog programs for graduate schools of library and information science. Instructors of Reference, Online Information Retrieval, Collection Development, Introduction to Library Science, Competitive Intelligence, User Instruction, and many other courses will benefit from ProQuest's free services. Also, find out more about our unique scholarship and internship programs.

#### Breakfast with Elsevier *Mt. Evans B*

New Directions for Publishing. Come for breakfast and take part in a lively discussion on next-generation products from Elsevier. Your input is important.

7:30 a.m. – 8:30 a.m. *Mt. Elbert*

### SIG Session 3: Business, Planning and Discussion Meetings

Join special interest groups for planning and informal discussion.

*Adjunct and Part-time Faculty* - **Dan Fuller** and **Penny Grant**, San Jose State University

*Historical Perspectives* - **Gale Eaton**, University of Rhode Island

*International Library Education* - **Leslie Farmer**, University of California, Long Beach

*Preservation Education* - **Mary Edsall Choquette**, Catholic University of America

*Technical Services* - **Barbara Marson**, East Carolina University

*Youth Services* - **Anthony Bernier**, San Jose State University

8:30 a.m. – 10:00 a.m.

### Session 6: Panels and Juried Papers

6.1 *Mt. Evans A*

#### Juried Papers 9: Virtual Worlds

*Moderator:* **Lorri Mon**, Florida State University

This session examines the realities of virtual worlds in LIS education and practice. Authors will look at the impact of Second Life in relation to pedagogy, evaluation, and practice.

#### How a Simulated Library in the Second Life World Enhances Library and Information Science (LIS) Education: An LIS Education Program Study

**Feili Tu**, University of South Carolina

#### Evaluating the Use of Second Life by libraries and other information environments

**Ron Brown** and **Feili Tu**, University of South Carolina

#### Measurement Model of Students' Behavioral Intentions to Use Second Life Virtual Environments

**Yunfei Du**, University of North Texas

FRIDAY

# ALISE 2009 Annual Conference

FRIDAY

6.2 Mt. Evans B

## **ALISE Award Papers**

Moderator: **Marie L. Radford**, Rutgers University

## **ALISE Research Grants Competition**

(2008 Winner)

## **Learning From Our Students: Assessing Student Perceptions of Information Studies Programs and The Information Professions**

**Joan Cherry**, University of Toronto

**Luanne Freund**, University of British Columbia

and **Wendy Duff**, University of Toronto.

## **Bohdan S. Wynar/ALISE Research Paper Competition** (2009 Winner)

*Sponsored by Libraries Unlimited*

## **What is Next for FRBR? A Delphi Study**

**Yin Zhang** and **Athena Salaba**, Kent State University

## **Eugene Garfield/ALISE Doctoral Dissertation Competition** (2009 Winner) **Supporting Multiple Information-Seeking Strategies in a Single-System Framework**

**Xiuojun Yuan**, Rutgers University

## **Dialog/ALISE Methodology Paper Competition** (2009 Winner) **Studying Reference Encounters with the Pair Perception Comparison (PCC) Method**

**Derek L. Hansen** from University of Maryland

## **ALISE/Linworth Youth Services Paper Award** (2009 Winner) **Equal Opportunity? Poverty and Characteristics of School Library Media Centers**

**Shana Pribesh**, Old Dominion University, and  
**Karen Gavigan**, University of North Carolina at Greensboro

6.3 Grays Peak

## **Using e-Recruitment to Improve Diversity: Perspectives from Human Resources, Marketing, and Library Education**

Teaching Methods SIG

Convener: **Jami Jones**, East Carolina University

E-recruiting can be used as a powerful marketing tool to attract LIS program applicants, especially potential students of color. The design of online, interactive recruiting tools based on research and successful practice from the fields of marketing, human resources, and library education, has immediate implications for recruiting, for when it is successful, for its implications for teaching methods.

Panelists:

**Kyung-Sun (Sunny) Kim**, University of Wisconsin-Madison

**Ronald D. Pollock**, University of Texas-Austin

**Gail Munde**, East Carolina University

6.4 Longs Peak

## **LIS Cataloging Education for the 21st Century: Expectations and Challenges**

Technical Services SIG

Convener: **Barbara Marson**, East Carolina University

Moderator: **Sylvia Hall-Ellis**, University of Denver

The purpose of this discussion is to understand how the impact of the escalating rate of societal and technological developments fuels change and raises the already-high expectations of an information-driven society and how shifting demographic patterns among both information professionals and their clientele drive new organizational models for delivering resources and providing services.

Panelists

**Karen L. Neville**, Colorado Christian University

**Amy DelCastillo**, Boulder Valley School District

**Robin Trehaeven**, Bemis Public Library

6.5 Pikes Peak

## **Meeting the Student Learning Outcomes Requirements for NCATE and ALA Accreditation**

School Library Media SIG

Convener: **Allison Kaplan**, University of Wisconsin-Madison

# ALISE 2009 Annual Conference

FRIDAY

Demonstrating student-learning outcomes in LIS education programs is required by the National Council on Accreditation for Teacher Education (NCATE) and the American Library Association (ALA). Panelists will discuss the meaning of student-learning outcomes and how those outcomes can be addressed for NCATE and ALA accreditation standards.

*Panelists:*

**Gail Dickinson**, Old Dominion University

**Allison G. Kaplan**, University of Wisconsin-Madison

**Donna Shannon**, University of South Carolina

**10:00 a.m. – 10:30 a.m. Imperial Foyer**

**Coffee Break**

*Sponsored by The H.W. Wilson Foundation*

**10:30 a.m. – 12:00 p.m. Session 7: Panels and Juried Papers**

**7.1 Mt. Evans A**

**Creative Uses of Story as Information**

*Moderator: Betsy Hearne*, University of Illinois at Urbana-Champaign

**A Narrative Compass: How I-Stories Shape Us and Our Work - Betsy Hearne**

Most of us have a narrative compass, a story that has guided our lifework, either from childhood or at some later stage. Hearne describes a book project titled *A Narrative Compass: Stories that Guide Women's Lives* in which 20 women scholars from several disciplines identify and examine the stories that motivated them and shaped their research. An interactive web site where readers can respond with their own stories extends the forum for collecting and analyzing information that often remains local or even "invisible" in the oral tradition.

**Stories within Stories within Stories: Historical Methods in LIS -**

**Melanie A. Kimball**

Historians examine documents in all formats to find evidence of the past: what happened, where it happened, who was involved, how it happened and, most elusive, why. Such

evidence provides facts upon which historians construct an interpretation of past events and lives. Using historiography, Kimball posits that the evidence historians collect is often itself a story, whether found in an annual report, a work diary, correspondence, or photographs.

**I-Create, YouTube: Digital Storytelling for All - Tonyia Tidline**

Contemporary forums like Second Life and YouTube tempt us to focus on the technological expansion of human ingenuity and forget the underlying purpose of communication – to share information, ideas, and experience. According to Fisher's Narrative Paradigm, communication is best understood as story. Tidline describes the coincidence of narrative and technology in the form of Digital Storytelling and discusses its logical fit within the sphere of LIS.

**Storytelling as an Approach to Participatory Design Using the Voices of Children - Sarai Lastra**

Participatory design explores the value of storytelling to augment the design of spaces that are meaningful places for collaboration. Inspired by her dissertation research at Paseo Boricua in Chicago, Lastra describes a project, "Mi Ventana al Mundo Global" ("My Window to a Global World") that involves the design of a computer lab for 0-5 year olds at Universidad del Turabo. In this project, stories from children, parents, and staff provided a useful framework for participatory design from the perspective of children as principal designers.

**Betsy Hearne**, University of Illinois at Urbana-Champaign; **Melanie A. Kimball**, Simmons College; **Tonyia Tidline**, Independent Scholar; and **Sarai Lastra**, Turabo University in Puerto Rico.

**7.2 Mt. Evans B**

**OCLC/ALISE LIS Research Grant Papers**

*Moderator: Lynn Silipigni Connaway* (OCLC)

**User-based Question Answering: An Exploratory Study of Community-generated Information Exchange in Yahoo! Answers**

**Rong Tang** and **Sheila Denn**, Simmons College



# ALISE 2009 Annual Conference

FRIDAY

## Developing and Evaluating a Query Recommendation Feature to Assist Users with Online Information Seeking and Retrieval

**Diane Kelly**, University of North Carolina-Chapel Hill

## Analyzing Image Searching on the Web: How Do Undergraduates Search and Use Visual Information?

**Youngok Choi**, The Catholic University of America

## 7.3 Grays Peak

### Cultural Heritage and the Information Profession

Moderator: **Corinne Jörgensen**, Florida State University

There is a clear need for information professionals who can transcend the traditional boundaries between libraries, archives, and museums. This session will explore how LIS educators can collaborate with colleagues from museum studies, archival studies, and related programs to prepare students for careers as cultural heritage information professionals.

Panelists: **Tula Giannini**, Pratt Institute; **Wendy Duff**, University of Toronto; and **Paul Marty** and **Corinne Jörgensen**, Florida State University

## Interested in teaching on-line?

The School of Library and Information Science at San José State University is seeking applications for part-time faculty members interested in teaching on-line courses, especially in information retrieval, management, and information and society.

We use BlackBoard, Angel, and Elluminate. Please visit <http://slisweb.sjsu.edu/> for course offerings and class schedules.

A twenty hour on-line program in teaching by distance is available and required for new faculty.

Send electronic resume and indicate which courses you would be available to teach. Ph.D. is preferred.

Please contact Dr. Linda Main at [lmmain@slis.sjsu.edu](mailto:lmmain@slis.sjsu.edu).



SCHOOL OF LIBRARY  
AND INFORMATION SCIENCE

# ALISE 2009 Annual Conference

FRIDAY

## 7.4 Longs Peak

### Transforming Visions of Youth for LIS Education in the 21st Century

Youth Services SIG

Convener: **Anthony Bernier**, San Jose State University

Among the most popular constructions of youth is that it represents a period of development and conflict with the "adult world." How should LIS faculty envision "youth" within a service context? This program features 12 LIS faculty as they grapple with respective philosophies of/on youth.

Moderator: **Anthony Bernier**, San Jose State University

Presenters:

**Denise E., Agosto**, Drexel University  
**Sandra Hughes-Hassell**, University of North Carolina at Chapel Hill  
**Eliza T. Dresang**, University of Washington  
**Eric M. Meyers**, University of Washington  
**Betsy Diamant-Cohen**, Enoch Pratt Free Library  
**David Loertscher**, San Jose State University  
**Carrie Gardner**, Kurtztown University  
**Carol A. Doll**, Old Dominion University  
**Kathy Latrobe**, University of Oklahoma  
**Jamie Campbell Naidoo**, University of Alabama  
**Stephanie D. Reynolds**, University of Kentucky  
**Cindy Welch**, University of Tennessee

## 7.5 Pikes Peak

### Participatory Librarianship

This session will cover the emerging concepts of participatory librarianship from theory, to studies to new projects. Participatory librarianship recasts library and library practice using the concept that knowledge is created through conversation. Libraries are in the knowledge business, therefore libraries are in the conversation business.

Presenters:

**Todd Marshall**, Syracuse University, on the theoretical underpinnings of participatory networks

**David Pimental**, Syracuse University, and his examination of organizing principles in participatory environments

**R. David Lankes**, Syracuse University, on the implications for MLS education and the Reference Extract project.

**11:00 a.m. – 12:00 p.m.** Mt. Elbert

### Deans, Directors, and Chairs Meeting with ALA Office for Accreditation

Convener: **Karen O'Brien**, ALA Office for Accreditation

**12:00 p.m. – 1:00 p.m.** Imperial Ballroom

### Closing Session

Remarks from ALISE President **Linda C. Smith**, University of Illinois at Urbana-Champaign

**1:00 p.m. – 2:30 p.m.** Mt. Elbert

### Meet the Editors: Publishing in LIS

Moderator: **John Carlo Bertot**, University of Maryland

The session will begin with a brief panel discussion designed to promote research and publishing in LIS journals, followed by an opportunity for scholars and others to meet with journal editors and board members.

**Kathleen Burnett**, Co-Editor, *Journal of Education for Library and Information Science* (JELIS), Florida State University

**Sarah M. Pritchard**, Editor, *portal: Libraries and the Academy*, Northwestern University

**John M. Budd**, editorial board member, *Library Quarterly*, University of Missouri - Columbia

**1:00 p.m. – 4:00 p.m.** Torreys Peak

### ALISE Board of Directors Meeting

# ALISE 2008 AWARD WINNERS

## ALISE Awards

- **ALISE/Pratt-Severn Faculty Innovation Award**

**Michael Stephens**, Dominican University.

- **ALISE Award for Professional Contribution**

**Michael Eisenberg**, University of Washington.

- **ALISE Award for Teaching Excellence**

**Ann Carlson Weeks**, University of Maryland

- **ALISE/Norman Horrocks Leadership Award**

**Linda Most**, Florida State University

## ALISE Research Awards/Grants

- **Bohdan S. Wynar/ALISE Research Paper Competition**

*Sponsored by Libraries Unlimited*

**Yin Zhang** and **Athena Salaba**, from Kent State University

- **Eugene Garfield/ALISE Doctoral Dissertation Competition**

**Xiaojun Yuan**, Rutgers University

- **Dialog/ALISE Methodology Paper Competition**

**Derek L. Hansen**, University of Maryland

- **ALISE/Linworth Youth Services Paper Award**

**Shana Pribesh**, Old Dominion University, and  
**Karen Gavigan**, University of North Carolina at Greensboro

- **OCLC/ALISE LISRG (Library and Information Science Research Grant) Competition**

**Katherine La Barre** and **Carol Tilley**, University of Illinois at Urbana-Champaign

**Michael Khoo**, Drexel University

**Bill Kules**, The Catholic University of America

## ALISE Annual Conference Awards/Grants

- **ALISE/Jean Tague Sutcliffe Doctoral Student Research Poster Competition**

*Sponsored by University of Western Ontario*

Winner selected at Annual Conference

- **University of Washington Information School Youth Services Graduate Student Travel Award**

**Eric M. Meyers**, University of Washington

- **Doctoral Students to ALISE Grant**

*Sponsored by Libraries Unlimited*

**Shelagh Genuis**, University of Alberta and

**Marc Koscijew**, University of Western Ontario

# Thanks to our Sponsors and Exhibitors

## **Special Recognition (\$5,000+)**

OCLC  
The H.W. Wilson Foundation

## **Partner (\$1,000+)**

Drexel University  
Elsevier  
Libraries Unlimited  
Pratt Institute  
ProQuest  
Simmons College

## **Associate (\$500+)**

University of Pittsburgh

## **Supporter (\$300+)**

Second Hand Knowledge

## **Exhibitors**

CAS  
Drexel University  
LibGig/LAC  
Libraries Unlimited  
Neal-Schuman Publishers, Inc  
ProQuest  
Scarecrow Press  
OCLC  
University of South Florida  
University of Chicago Press (Friends' Table)

# Doctoral Student Reception Sponsoring Schools

*Confirmed as of December 26, 2008*

- Dalhousie University
- Dominican University
- Hawaii, University of
- Illinois at Urbana-Champaign, University of
- Louisiana State University
- Maryland, University of
- Missouri – Columbia, University of
- North Texas, University of
- Rutgers University
- San Jose State University
- Simmons College
- Wisconsin-Madison, University of

# ALISE Raffle

ALISE will be hosting a raffle this year to support the 2009 ALISE Awards and Honors program.

## **2010 Conference Raffle**

### **Prize**

A five-night stay at the Boston Park Plaza Hotel and Towers. This hotel stay is to be used for the 2010 ALISE Annual Conference in Boston. Estimated cost of this prize is \$1,000. Raffle tickets will be sold for \$15, or 2 tickets for \$25.

## **Libraries Unlimited Raffle**

### **Prize**

WIN the entire collection of approximately 105 books displayed by Libraries Unlimited. This fabulous collection has a retail value of over \$4,500! It includes titles for faculty, librarians, media specialists, and LIS students and will add significant resources to your library!

This prize is generously donated by Libraries Unlimited. Raffle tickets will be sold for \$15, or 2 tickets for \$25.

Buy your raffle tickets at the ALISE registration desk at the Maroon Peak room.



# ALISE 2008-2009 Board of Directors

## **President**

**Michèle V. Cloonan**, Simmons College

## **Vice-President / President-Elect**

**Linda C. Smith**, University of Illinois at Urbana-Champaign

## **Past President**

**Connie Van Fleet**, University of Oklahoma

## **Secretary/Treasurer**

**Lisa Given**, University of Alberta

## **Director for Special Interest Groups**

**Julie Hersberger**, University of North Carolina  
- Greensboro

## **Director for Membership Services**

**Melissa Gross**, Florida State University

## **Director for External Relations**

**Susan Roman**, Dominican University

## **ALISE Staff**

**Kathleen Combs**, Executive Director

**Yolanda Peterson**, Assistant

# 2009 Conference Program Planning Committee

## **Coordinating Chairs**

**Tula Giannini**, Pratt Institute

**Paul Marty**, Florida State University

## **Committee Members**

**Elizabeth Aversa**, University of Alabama

**Michèle V. Cloonan**, Simmons College

**Jennifer Crispin**, University of Missouri

**Trudi Hahn**, University of Maryland

**Samantha Hastings**, University of South  
Carolina

**Julie Hersberger**, University of North  
Carolina – Greensboro

**Heather Hill**, University of Missouri

**R. David Lankes**, Syracuse University

**Ann O'Neil**, Emporia State University

**Anne Perrault**, University of South  
Carolina

**Linda C. Smith**, University of Illinois at  
Urbana-Champaign

# ALISE 2010 ANNUAL Conference

January 12-15, 2010  
Boston, MA

**Creating a Culture of Collaboration**

[www.alise.org](http://www.alise.org)

## Resolutions

Written copies of all resolutions, including resolutions contained in committee reports, must be given to the membership before they are to be presented to that body for action. To permit this, text must be submitted to the Governance Committee 24 hours in advance of presentation. A resolution that has fiscal implications must be submitted to the President as well as the Governance Committee 24 hours before it is to be voted on so that the Budget Committee can provide information on fiscal implications.

Resolution approved January 13, 1979, limits resolutions to statements on substantive matters relating to library education and the profession of librarianship to be voted on by membership.

## Governance Committee

**Connie VanFleet**, University of Oklahoma (chair)  
**Elizabeth Aversa**, University of Alabama  
**Ken Haycock**, San Jose State University  
**June Lester**, University of Oklahoma  
**Louise Robbins**, University of Wisconsin-Madison

## Vision

By 2010, ALISE will be the visionary organization in Library and Information Science education. The Association will be known for its unique purpose, build its strength and communicate that strength through vision, voice, and visibility.

## Mission

ALISE promotes excellence in research, teaching, and service for Library and Information Science educators through leadership, collaboration, advocacy, and dissemination of research.

## Enduring Purpose

ALISE promotes research that informs the scholarship of teaching and learning for Library and Information Science, enabling members to integrate research into teaching and learning.

## Strategic Directions 2007-2010

1. Achieving the Association's unique purpose through focus on the scholarship of teaching and learning and the enhancement of research;
2. Promoting the Association's unique purpose through improved collaboration and marketing and communication of the ALISE purpose and vision;
3. Delivering relevant, high-quality services and developing strategic new initiatives to ensure membership growth to develop the Association's unique purpose;
4. Enhancing revenue streams to extend the Association's unique purpose through planned development and advancement and new initiatives;
5. Providing and developing leadership for the Association to ensure voice, vision, and visibility.

# Grand Hyatt Denver

